




THE ROYAL PALACE in the Munich Residence

Verwaltung der Residenz München
Residenzstr. 1 · 80333 München
Tel. 089 29067-1 · Fax 089 29067-225
www.residenz-muenchen-blog.de
www.residenz-muenchen.de

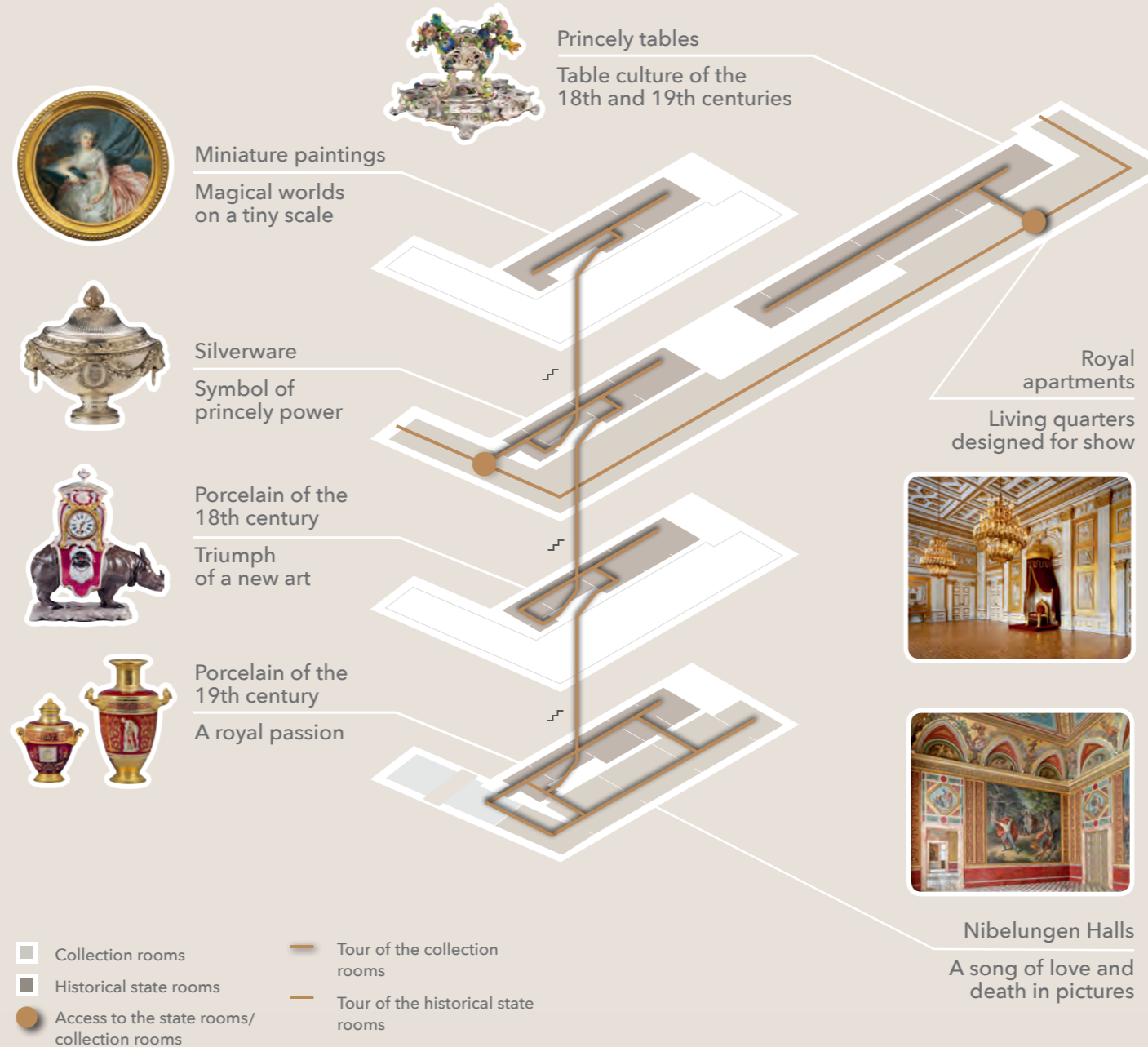
Opening times (reopening on 29 June 2018):
1 April – 15 October: 9 am – 6 pm
16 October – 31 March: 10 am – 5 pm
Last admission: 5 pm or 4 pm respectively

The Royal Palace can be visited as part of the tour through the Residence Museum. Direct access is from Room 71 (Golden Hall) on the first upper floor. The Royal Palace is only accessible via numerous stairs and steps and is thus unfortunately not barrier free. The exit is also through the Golden Hall.

 Bayerische Verwaltung der staatlichen Schlösser, Gärten und Seen
www.schloesser.bayern.de
#schloesserbayern
schloesserblog.bayern.de  

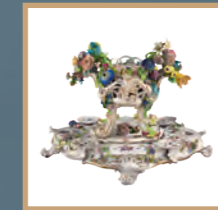


Overview of the collection rooms



THE ROYAL PALACE

in the Munich Residence





»I wish you an enjoyable visit to the Royal Palace!«

Albert Füracker, MdL
Bavarian Minister of Finance, Regional Development and Regional Identity

NEW DISCOVERIES IN FAMILIAR SURROUNDINGS: THE NEW ROYAL PALACE IN THE MUNICH RESIDENCE!

After a ten-year renovation period, the Royal Palace (Königsbau) is opening its doors again in summer 2018. The massive neoclassical palace was designed for King Ludwig I (r. 1825 – 1848) by the court architect Leo v. Klenze in 1826 – 1835 and built in the southern part of the Residence complex. The comprehensively restored Nibelungen Halls on the ground floor and the sumptuously furnished royal apartments of the ruling couple on the first floor are masterpieces of German interior design from the first half of the 19th century.



Hall of Treason
in the Nibelungen Halls;
jug and bowl from the
Bamberg silver service,
Augsburg, 1769/70



»The arrival of Brunhild in Worms«, fresco in the Nibelungen Halls

In addition, over 20 completely new exhibition rooms on four floors with a total area of more than 1,200 square metres, located behind the restored state rooms, will be opened to the public for the first time. Here the magnificent and internationally outstanding special collections of the Residence are displayed in a modern museum environment. Find out all about the fascinating world of lavish court festivities, the use of art as a power symbol and a collecting tradition pursued by the Wittelsbachs for centuries!

Items from
Ludwig I's
Onyx Service



The shimmering world of the silver chamber, entered from the antechambers of the Royal Palace, displays items collected by the electors and kings and illustrates the extravagant splendour of princely table culture. This is followed by the colourful treasury of the Wittelsbach porcelain collection – richly painted white gold from the 18th and 19th centuries. Masterpieces from the Wittelsbach's own manufactories in Nymphenburg and Frankenthal are surrounded by acquisitions from the centres of early European porcelain art such as Meißen and Sèvres. Admire the fragile presents from the French court or Ludwig I's »Porcelain Pinakothek« – a highpoint of 19th-century porcelain painting!



Queen's Salon with wall decoration in the Pompeiian style



King's Throne Room in the royal apartments

On the top floor, in a mysterious half-light, is the astounding tiny world of the miniatures collection. Discover the wealth of detail in the precious little paintings from four centuries!

Additional features of this new museum attraction are the free audio guide and media stations with audio-visual material.



Raphael's »Tempi Madonna«
reproduced on porcelain



Miniature with a portrait of the
artist Jean-Baptiste Singry